

COMPRESSION MACHINES

Compression Test (press) Machine

Model: UT 150/EL, UT 150/50EL, UT 200/EL, UT 200/50EL

These new type of test machine are specially designed for site and Lab. Application for testing 15 cube or 30cm x 15cm dia cylinder specimen. The main features are light weight, compact, rigids and easy to move and handle. The machine are built-in with fast approach pumps system and fine load speed control level knob.

Available in 1500, 2000 and 3000kN Single or Twin gauge

- Also available in rigid welded frame or 4 column frame.
- Specifically designed for easy mobility
- Simple operation to minimize running cost
- Precise spherical cap for optimum results.
- Motorized hydraulic power pack operation with rapid approach system
- Single / Twin load gauge 300mm diameter with maximum red pointer
- Accuracy within +/- 1% error
- Meet Standard of BS EN 12390, BS 1881-115A, AS1012. (Optional)
- Calibration accuracy to BS EN 12390 Grade 1.0, ASTM E4, AS2193 Grade A



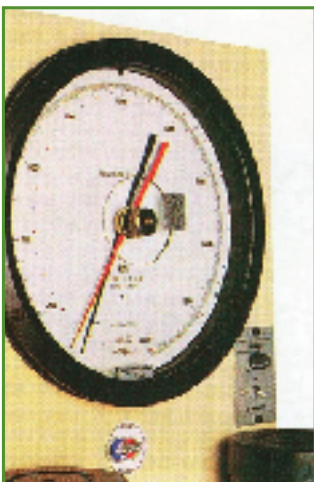
GENERAL SPECIFICATION

Model	UT 150/EL	UT 150/50EL	UT 200/EL	UT 200/50EL
Load gauge diameter	300 mm			
Scale division	1500kN x 5kN	1500kN x 5kN 500kN x 1kN	2000kN x 5kN	2000kN x 5kN 500kN x 1kN
Vertical clearance	330 mm			
Horizontal clearance	220mm		240mm	
Ram travel	50 mm			
Power	240V, 50Hz, 1ph			
Approx. overall dimension	600 x 800 x 162mm		620 x 800 x 1700mm	
Approx. weight (kg)	400	410	580	600

■ UT 150/EL, UT 200/EL



■ U 10



U 10 Mechanical Load Pacer

The U 10 Mechanical Load Pacer rotation disc is driven by a variable speed control motor with on/off switch and mounted on a gauge housing. The plastic disc has a series of coloured dots around it face to perm it verification of the accurate loading rate applied to the correct specimen. The pacer speed can be set between 1.5kN to 18kN per second depending on specimen size.