

TM 15

Binder Recovery Apparatus-Double Sample Type BS 598

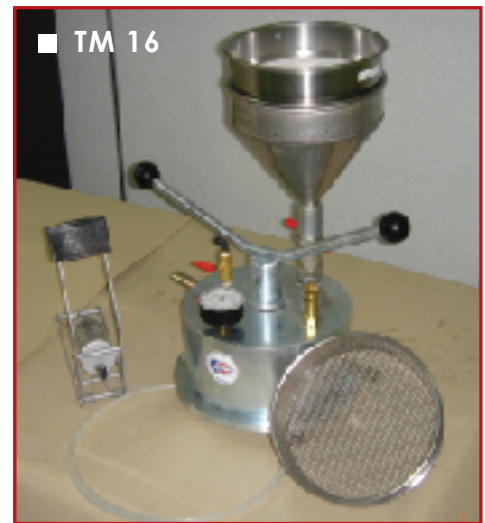
The unit comprise a vacuum pump with vacuum gauge water bath for twin specimens, 2nos 250ml flask with bung, rubber tubing and mounted on wooden board. Power: 240V, 50Hz, 1ph



TM 16

Pressure Filter

Comprising a pressure vessel with filter and pressure gauge 5.5 bar and a foot pump and filter funnel to take 200mm diameter test sieve.



TM 16/A

Filter Paper

270mm diameter with 33mm diameter central hole, pack of 100pcs

TM 17

Solvent Recovery Still

Fully stainless steel unit with 2 tanks, one for dirty solvent and another one for clean solvent, a coolant system provided which needs to be connected to a water tap. For safety purpose, an automatic cut off feature is supplied where it function when the solvent level too low or the process is completed. The apparatus is easy to install, efficient, compact unit and totally self contained.

Dimension: 330mm x 410mm x 660mm approx

Power: 220-240V, 50Hz, 1ph

Weight: 18kg approx

TM 18

Vacuum Pyknometer

ASTM D2041

10 litres capacity with transparent plexiglass, with valve and gauge on top cover. The apparatus is for rapid determination of asphalt content, bulk specific gravity of aggregates, specific gravity of bituminous uncompacted road mixtures and the percentage of air voids in compacted mixtures.

Dimension: 300mm dia x 450mm (H).

Weight: 11kg approx.

